



Capability Statement

2024

About Us

Cley Studio is an architecture and interiors practice based in Sydney and Melbourne, Australia. Developing a reputation for work that is thorough and thoughtful, our studio's portfolio spans sectors from workplace to residential.

We are architects, makers and dreamers, inspired by so much more than just bricks and mortar. Exploring form, place, materiality, light and sustainability, we work to craft spaces that ignite an emotional connection.

We strive for our work to be meticulous in craft and timeless in execution. We are not afraid to take risks but, equally, we are comfortable making buildings that are quietly confident.

We partner with clients who seek excellence, and who share parallel values and aspirations.



Our Team

Led by director; Clayton Edwards, our team works collaboratively across our projects, relying on our individual strengths and curiosities to produce exceptional outcomes. As people, we are passionate and persistent, empathic and kind. These ethics make their way into our work, influencing our design process and client relationships, and underscoring our finished buildings.



Clayton Edwards

Director - Architecture + Interiors
Registered Architect

Bachelor of Environmental Design
Masters of Architecture
AgilePM Project Management Foundation

LinkedIn

Key Skills: Architecture, Interior Architecture,
Stakeholder Engagement, Masterplanning

Clayton brings over 12 years of architectural and interior design experience across a breadth of work including a number of award winning residential, heritage and commercial fitout projects.

As Director of Cley Studio, Clayton is responsible for design direction, quality assurance processes and mechanisms within the studio at varying points of the iterative design process. He is extremely agile, embracing a collaborative approach to projects to ensure only the most informed and considered design solutions are ideated, conceptualised and developed.

Project Experience:

- Jenolan Caves House Hotel, Blue Mountains - Architecture + Interiors
- 555 Collins Street, Melbourne - Placemaking
- 480 Swan Street, Melbourne - Experience Strategy
- Wesley Place, Melbourne - Placemaking
- Shire of Harvey - Tourism & Visitor Service Strategy
- Murray River, Albury - Visitor Experience + Placemaking Strategy
- Metro HQ, Melbourne - Learning + Visitor Centre Refurbishment
- St Crispin Lane, Melbourne - Architecture
- Wollert Makers Studio, Melbourne - Architecture
- Lifeblood Donor Centre of the Future, Australia Wide - Interior design guidelines + experience strategy
- MLC, Melbourne - Precinct Redevelopment
- Greenwood Place, Melbourne - Commercial Redevelopment
- Hopkins House, Melbourne - Architecture

Previous Experience:

- Oct 2018 - June 2019: Senior Design Manager, Crown Resorts Sydney
- Sept 2016 - Oct 2018: Project Architect, Neeson Murcutt Architects, Sydney
- Nov 2015 - Oct 2016: Project Architect, Anthony Gill Architects, Sydney
- Jul 2011 - Nov 2015: Graduate Architect, Spaceagency Architects, Perth

Previous Project Experience:

- Spring Bay Mill Eco Resort + Masterplan
- Parramatta Pool Competition
- Bellevue Hill House
- Ruthven St House
- Lovefish Restaurant, Barangaroo
- Crown Resorts Barangaroo
- Poly Restaurant, Surry Hills
- Knustford Multi-Residential Stage 1 + 2
- Bread In Common
- Strange Company
- Petition Kitchen, Wine + Bar
- Longchim
- Kathleen St House
- Lane Mixed Use
- Villa Stati



Benjamin Shields

Senior Architect
Registered Architect

Masters of Architecture
Bachelor of Planning and Design

Benjamin is a multi-disciplinary designer and registered architect with over nine years experience working across single residential, multi-residential and workplace projects.

He is experienced in all stages of design and construction, and passionate about built environments that are energy-efficient, waste-conscious, and environmentally friendly, with kindness at their core.



Lyle Kahn

Graduate of Architecture

Masters of Architecture
Bachelor of Architectural Design

Lyle is a highly creative designer and thinker. With a passion for strong conceptual ideas, he revels in how this can be carried through and maintained in a projects execution.

Born in South Africa, and having lived and studied throughout Asia and the Netherlands, Lyle brings a global perspective to his work that is always community-centric and unique to the surrounding environment.



Chris Lozanovski

Senior Designer

Bachelor of Science + Architectural Science
AgilePM Project Management Foundation

Chris is a dynamic designer who brings a fresh and intentional approach to his work.

Since beginning at We Are Best, Chris has grown his skills beyond design and documentation to include effective problem solving and project coordination. With a keen focus on the details, his work is refined and resolved, emphasising quality outcomes regardless of the project.

Jenolan Caves House

PLAY

Status

In Progress

Client

Jenolan Caves House Reserve Trust

Consultants

BSE

Jenson Hughs

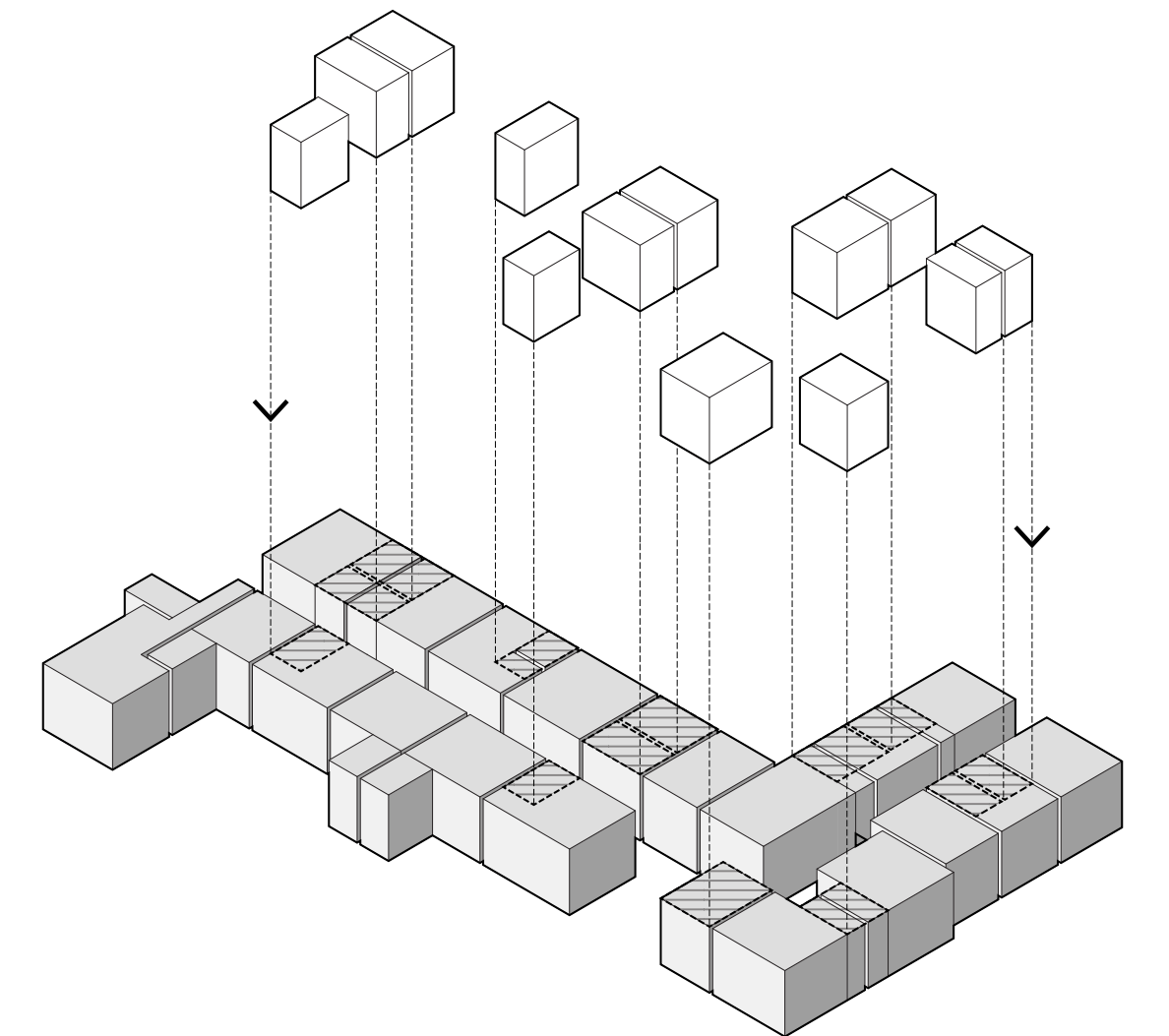
SDA Structures

Our approach to the refurbishment of the existing caves house hotel looked at preserving the site's character and giving it a modern twist that complements its history. Our aim is to create a place with layers of authenticity by connecting with the surroundings, seamlessly blending old and new, sprucing up what's already there, and paying homage to Australian craftsmanship. We want to introduce elements that bring joy and a touch of surprise, maintaining a sense of the site's essential qualities while making sure it's safe and accessible.



Jenolan Caves House

PLAY



As we breathe new life into Caves House, we're not just revealing its rich history; we're also embracing sustainability and the human stories behind it, making this destination truly one-of-a-kind in Australia. The idea of 'rejuvenation' broadly frames the intent of the project and future of Jenolan Caves House – environmental rejuvenation, social rejuvenation, economic rejuvenation.

The Link

WORK

Status

Completed 2023

Client

Spark NELP

Consultants

Builder - MIC Projects

Through a captivating design response, 'The Link' revives an existing commercial bank tenancy to create a destination that propels community inclusivity, learning and skills development. The space prioritises natural light, durability, flexibility, and a communal atmosphere. Through a pared back material execution we created an environment that encourages interactions and longevity well beyond its current clients lifespan.



The Link

WORK



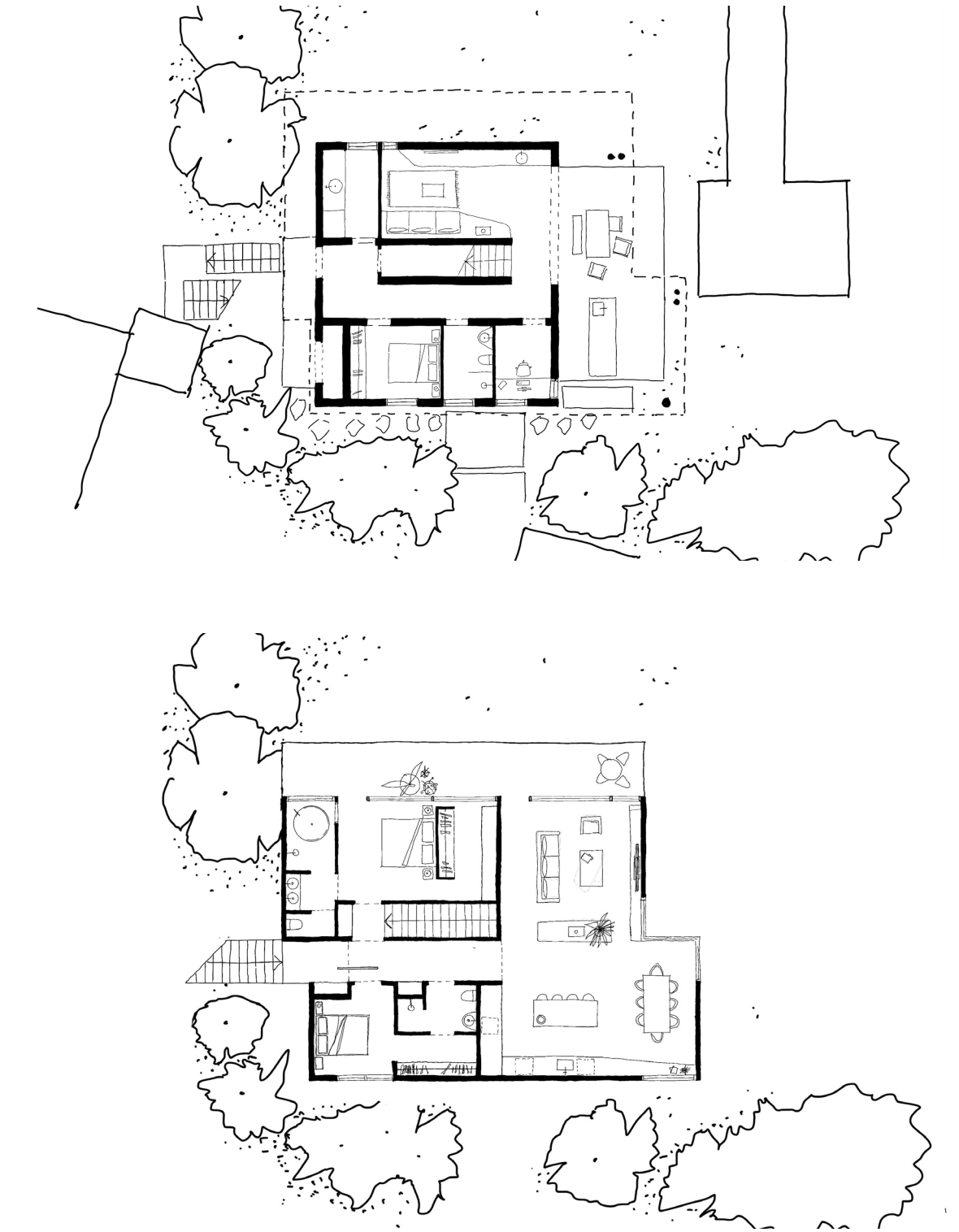
Shoreham

LIVE

Status

In Progress

Engaged to create the clients future beach side home we began interrogating the figure/ground relationship. With that an upside down house evolved. The architectural language is simple and direct, quietly confident. A series of apertures, both physical and visual, activate the northern and eastern facades, establishing a dynamic interplay with the environment. A robust material palette of white slurried brick, steel and natural timber will allow the building to seamlessly settle into its site.



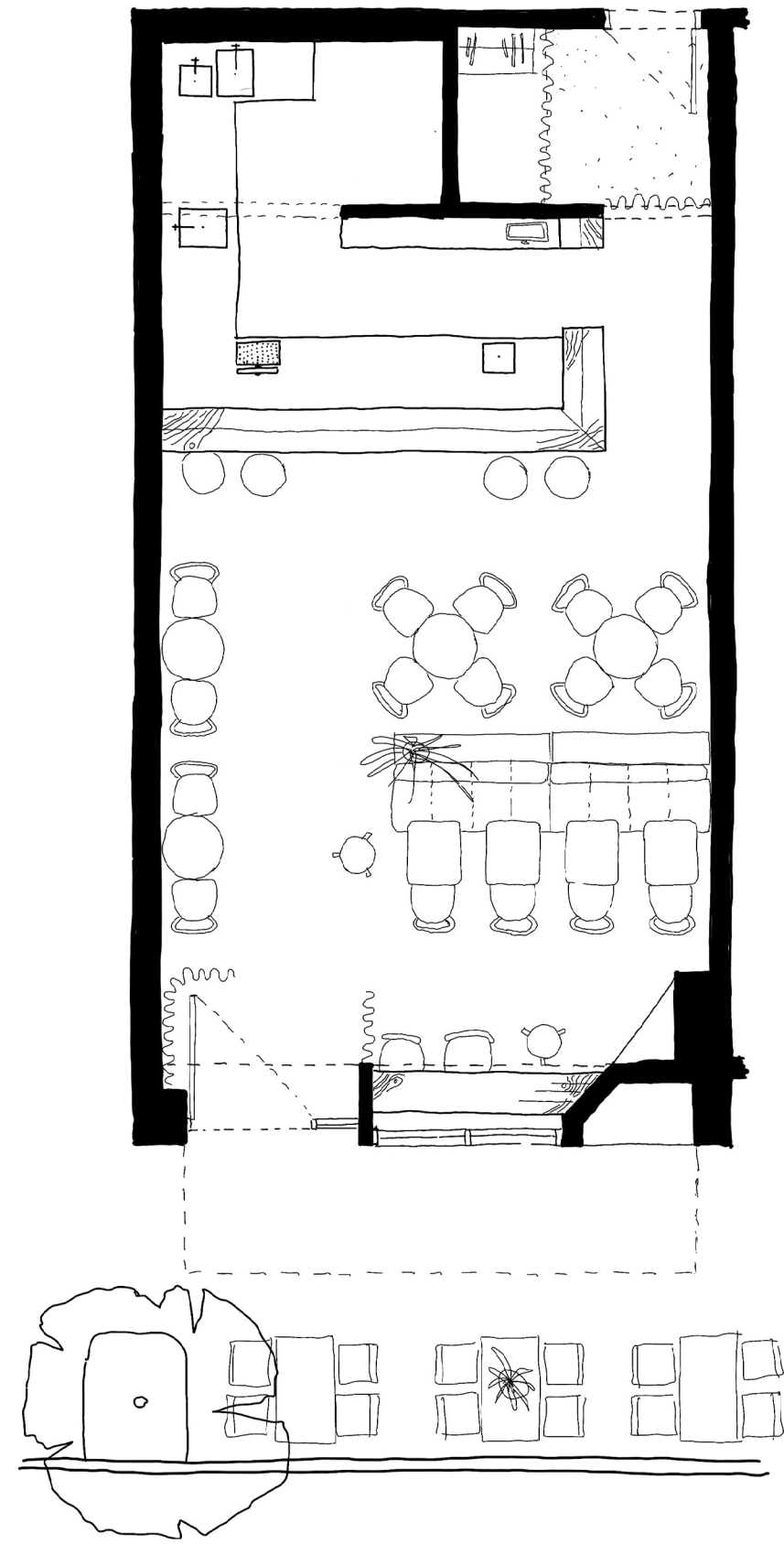
Goldfish

PLAY

Status

In Progress

We were engaged to create a “A notably distinct wine watering hole that will quench the thirst of South Richmonders”. With a desire to curate a space that interpreted classic materials into a contemporary, fun and inviting destination.



We're a proud member of

MIJASU

People led places, spaces and experiences

Mijasú is an interdisciplinary group of design practices, passionate about how communities live and thrive.

We are intelligent, curious and strategic, designing from ideas and human insights rather than habitual thinking. As a team, we create the future of places, spaces and experiences that bring people together.

Working with us gives you access to the full family.
A bigger team means we always dream bigger; together.



CLEY
STUDIO

Architecture + Interiors

Best

Placemaking + Wayfinding

ARCHITEX

Architectural Documentation

People-led Design	People are at the centre of everything we do. We connect with our communities by directly engaging with their needs, wants and reactions. While our services are diverse, their intent is universal: to create highly-connected places, spaces and experiences that contribute to productivity, health and happiness.
Challenge Us	We welcome challenges and challengers throughout every part of the process. Whether it's a risk, obstacle or opportunity, we thrive on troubleshooting projects – especially where opportunities exist in sustainability and technology. By aiming beyond the horizon, we're able to make our communities more engaging, inclusive and diverse.
Effective Collaboration	The old one-size-fits-all approach doesn't apply to our clients. And with our family of businesses, we're able to offer an interdisciplinary response to any project. We lean on each other and are transparent with our work so that no opportunity is left unexplored, and the best outcomes are achieved.
Purposeful progression	We seize every opportunity to celebrate and learn from our unique differences. By actively championing gender, ethnic and cultural diversity across our collective everyday, our work becomes truly progressive. From the local bar to the boardroom, every person has a seat at our table.





Melbourne + 61 3 7003 5279

Sydney + 61 2 9633 5888

www.cleystudio.com.au



Mijasu Pty Ltd T/As Cley Studio ARBV Reg 5205

NSW Nominated Architect: Clayton Edwards Reg 11632

Fair Trading NSW Design Practitioner Registration: Robert Del Pizzo DEP0001254